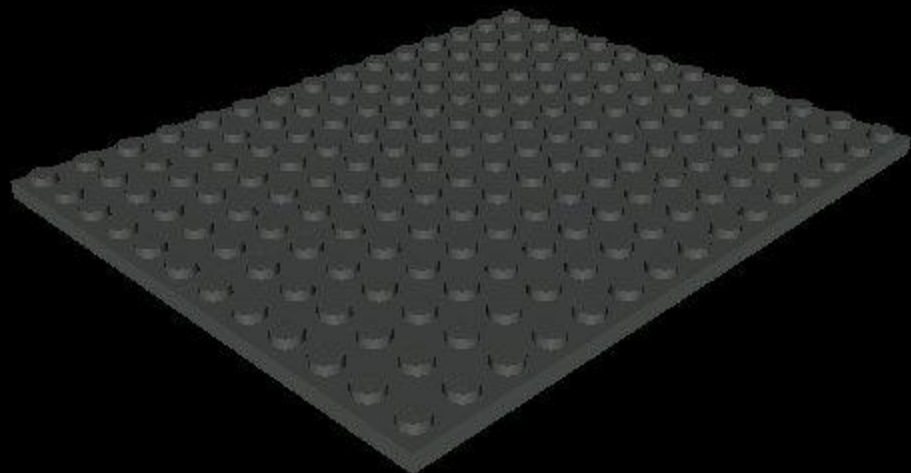


Parts Needed:

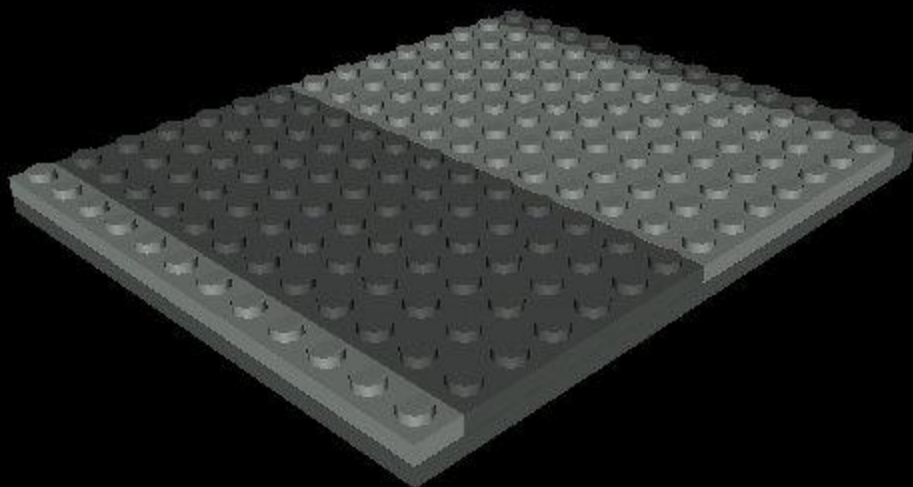
2x Plate 14x6 (Substrate (DG))

1x Plate 1x12 (Substrate (DG))



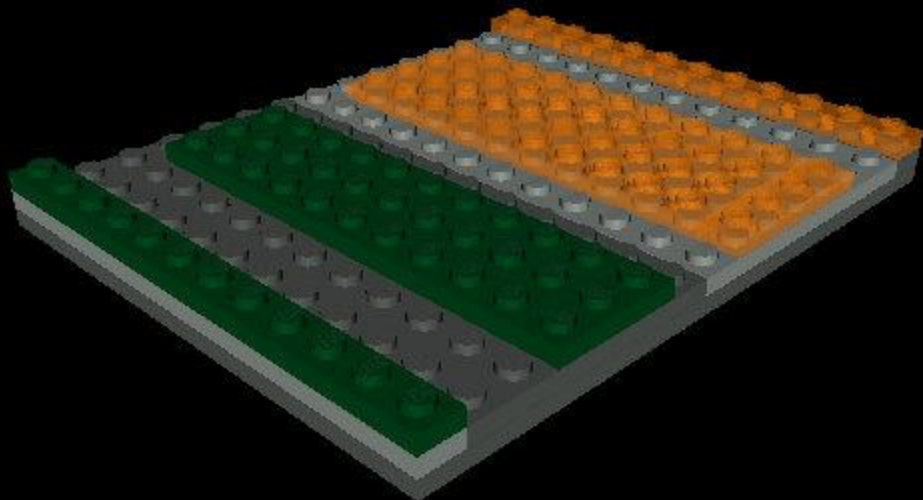
Parts Needed:

- 1x Plate 12x6 (N-Well (LG))
- 2x Plate 1x12 (N-Well (LG))
- 1x Plate 12x6 (Substrate (DG))
- 1x Plate 1x12 (Substrate (DG))



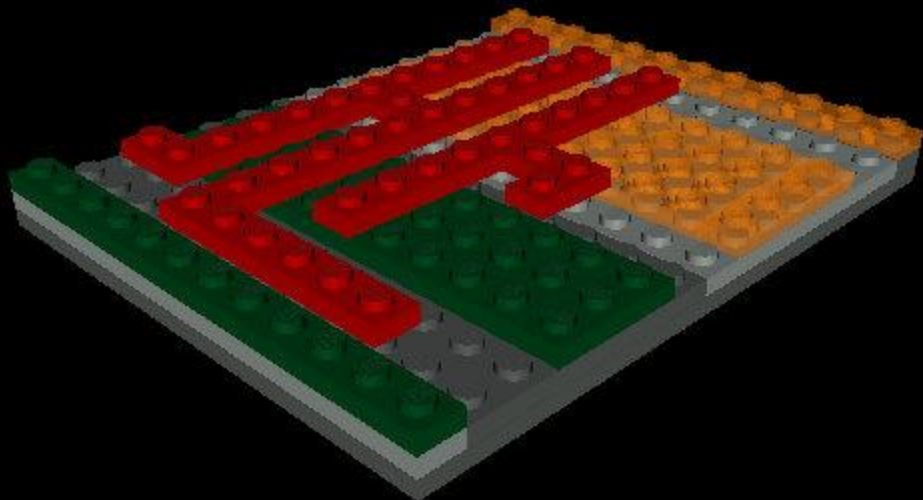
Parts Needed:

1x Plate 10x4 (PMOS (D0))
1x Plate 1x4 (PMOS (D0))
1x Plate 1x12 (PMOS (D0))
1x Plate 1x3 (NMOS (DG))
1x Plate 10x2 (NMOS (DG))
1x Plate 1x10 (NMOS (DG))
1x Plate 1x12 (NMOS (DG))



Parts Needed:

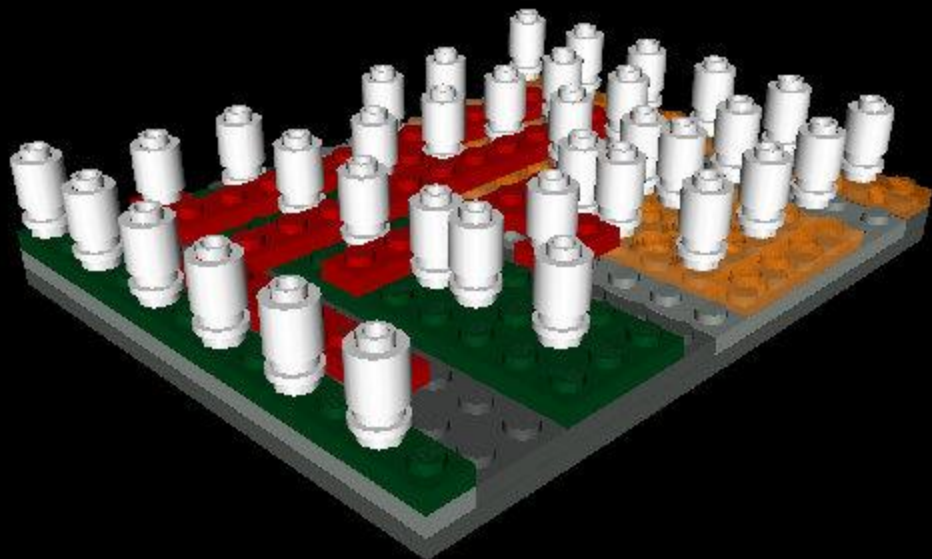
- 2x Plate 1x2 (Poly (Red))
- 3x Plate 1x1 (Poly (Red))
- 1x Plate 1x4 (Poly (Red))
- 2x Plate 1x10 (Poly (Red))
- 1x Plate 1x12 (Poly (Red))



Parts Needed:

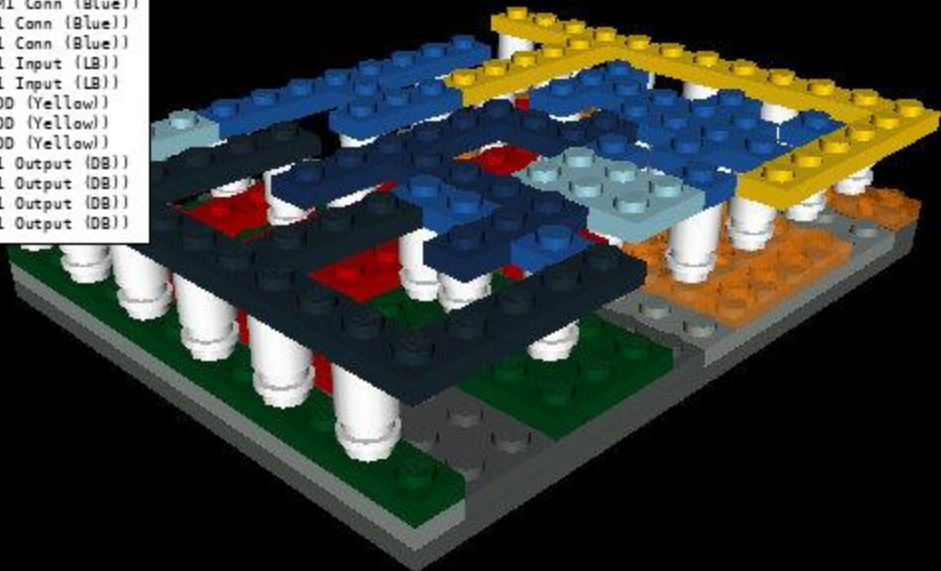
36x Brick 1x1 Round (Contact (White))

33x Plate 1x1 Round (Contact (White))



Parts Needed:

1x Plate 1x3 (VSS (Black))
2x Plate 1x4 (VSS (Black))
1x Plate 1x12 (VSS (Black))
3x Plate 1x2 (M1 Conn (Blue))
10x Plate 1x1 (M1 Conn (Blue))
3x Plate 1x3 (M1 Conn (Blue))
1x Plate 1x6 (M1 Conn (Blue))
1x Plate 2x3 (M1 Input (LB))
1x Plate 1x2 (M1 Input (LB))
1x Plate 1x1 (VDD (Yellow))
1x Plate 1x3 (VDD (Yellow))
3x Plate 1x6 (VDD (Yellow))
1x Plate 1x2 (M1 Output (DB))
1x Plate 1x1 (M1 Output (DB))
2x Plate 1x3 (M1 Output (DB))
1x Plate 1x6 (M1 Output (DB))



Parts Needed:

7x Tile 1x1 (VSS (Black))
17x Tile 1x1 (M1 Conn (Blue))
2x Tile 1x1 (M1 Input (LB))
8x Tile 1x1 (VDD (Yellow))
2x Tile 1x1 (M1 Output (OB))

