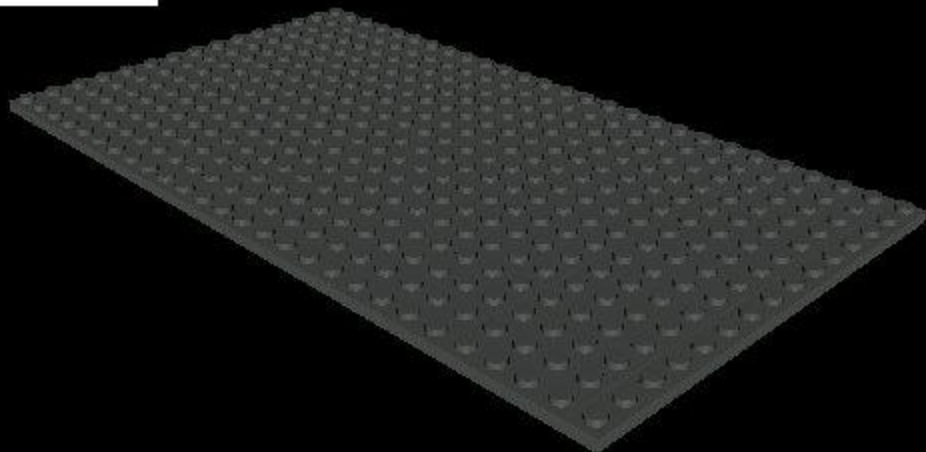


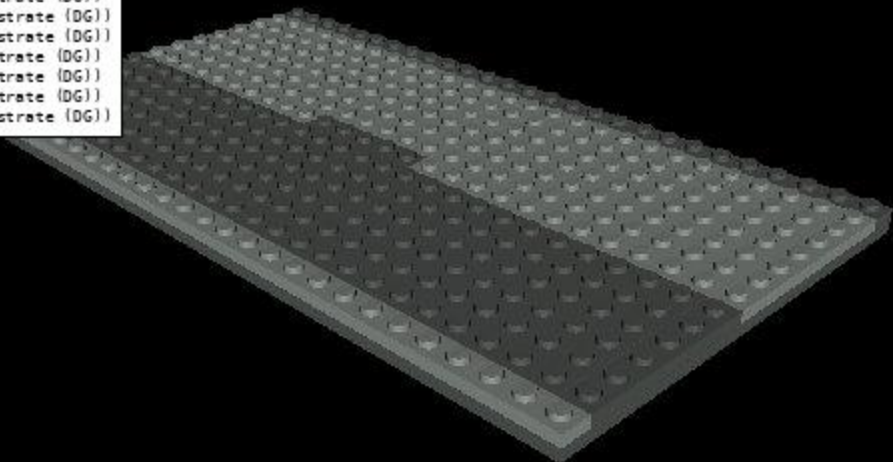
Parts Needed:

1x Plate 2x4 (Substrate (DG))
1x Plate 1x2 (Substrate (DG))
1x Plate 16x6 (Substrate (DG))
1x Plate 12x4 (Substrate (DG))
1x Plate 14x6 (Substrate (DG))
1x Plate 1x3 (Substrate (DG))
3x Plate 1x12 (Substrate (DG))
1x Plate 16x8 (Substrate (DG))



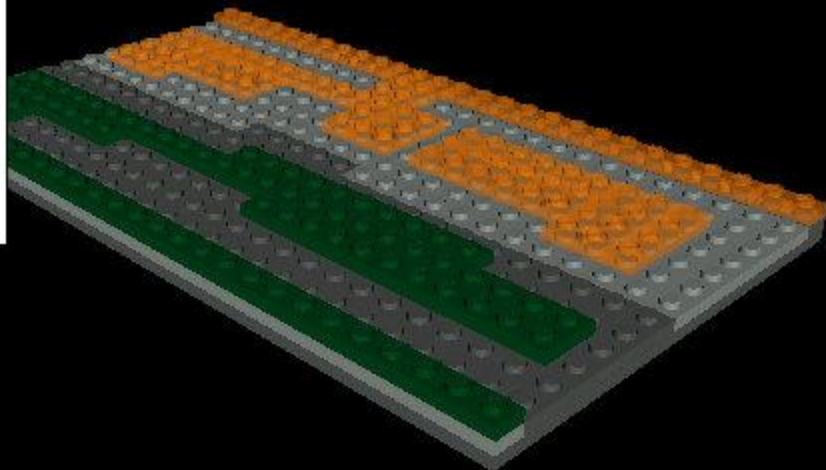
Parts Needed:

1x Plate 12x6 (N-Well (LG))
1x Plate 6x4 (N-Well (LG))
1x Plate 10x6 (N-Well (LG))
1x Plate 1x3 (N-Well (LG))
1x Plate 1x6 (N-Well (LG))
1x Plate 1x10 (N-Well (LG))
3x Plate 1x12 (N-Well (LG))
1x Plate 1x1 (Substrate (DG))
1x Plate 16x6 (Substrate (DG))
1x Plate 10x6 (Substrate (DG))
1x Plate 1x3 (Substrate (DG))
1x Plate 1x6 (Substrate (DG))
1x Plate 1x4 (Substrate (DG))
2x Plate 1x12 (Substrate (DG))



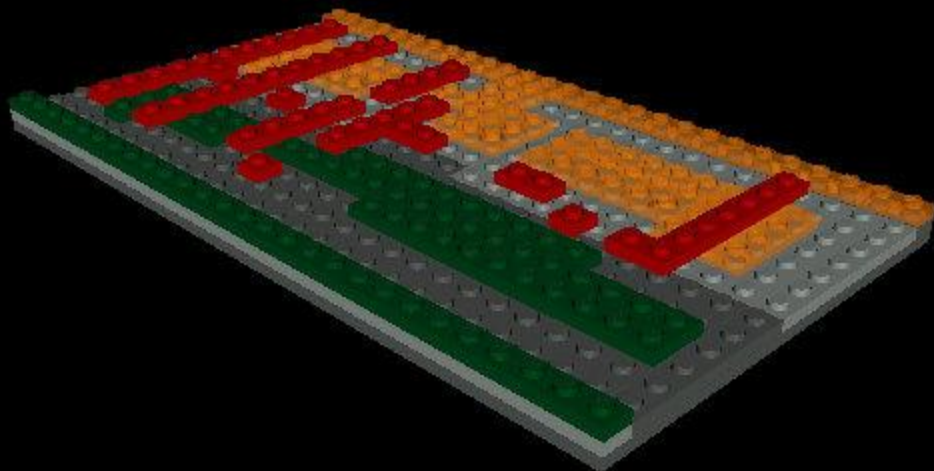
Parts Needed:

3x Plate 2x4 (PMOS (DO))
1x Plate 2x3 (PMOS (DO))
1x Plate 1x2 (PMOS (DO))
1x Plate 1x1 (PMOS (DO))
1x Plate 1x8 (PMOS (DO))
1x Plate 1x3 (PMOS (DO))
2x Plate 1x6 (PMOS (DO))
2x Plate 1x4 (PMOS (DO))
1x Plate 2x6 (PMOS (DO))
1x Plate 1x10 (PMOS (DO))
1x Plate 1x12 (PMOS (DO))
1x Plate 2x4 (NMOS (DG))
1x Plate 2x2 (NMOS (DG))
3x Plate 1x2 (NMOS (DG))
1x Plate 1x1 (NMOS (DG))
2x Plate 1x3 (NMOS (DG))
2x Plate 1x6 (NMOS (DG))
1x Plate 10x2 (NMOS (DG))
2x Plate 1x12 (NMOS (DG))



Parts Needed:

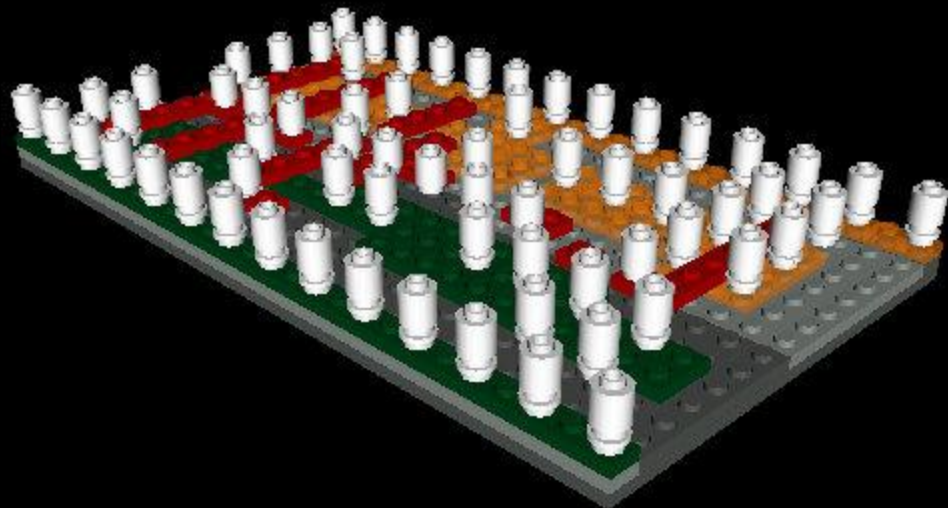
- 3x Plate 1x2 (Poly (Red))
- 8x Plate 1x1 (Poly (Red))
- 1x Plate 1x6 (Poly (Red))
- 3x Plate 1x4 (Poly (Red))
- 2x Plate 1x10 (Poly (Red))



Parts Needed:

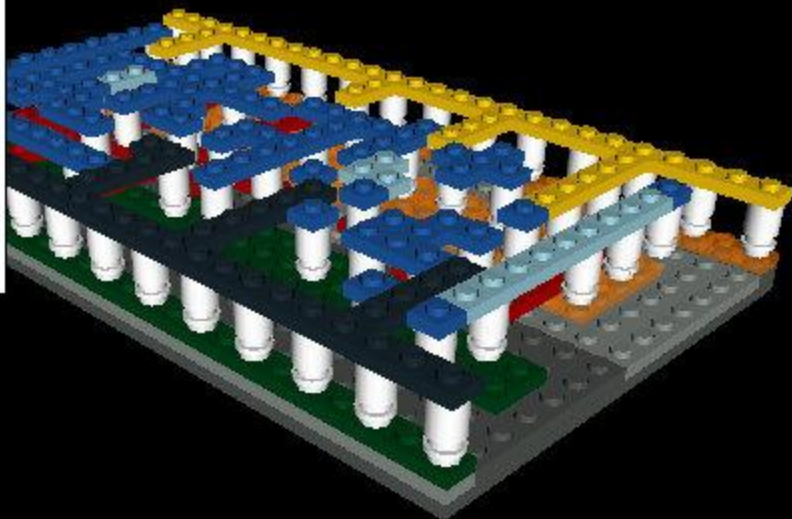
67x Brick 1x1 Round (Contact (White))

58x Plate 1x1 Round (Contact (White))



Parts Needed:

1x Plate 1x2 (VSS (Black))
2x Plate 1x1 (VSS (Black))
1x Plate 1x3 (VSS (Black))
3x Plate 1x4 (VSS (Black))
2x Plate 1x12 (VSS (Black))
1x Plate 2x2 (M1 Conn (Blue))
4x Plate 1x2 (M1 Conn (Blue))
16x Plate 1x1 (M1 Conn (Blue))
5x Plate 1x3 (M1 Conn (Blue))
2x Plate 1x6 (M1 Conn (Blue))
6x Plate 1x4 (M1 Conn (Blue))
1x Plate 1x10 (M1 Conn (Blue))
2x Plate 1x2 (M1 Input (LB))
2x Plate 1x1 (M1 Input (LB))
1x Plate 1x8 (M1 Input (LB))
1x Plate 1x8 (VDD (Yellow))
2x Plate 1x3 (VDD (Yellow))
1x Plate 1x6 (VDD (Yellow))
5x Plate 1x4 (VDD (Yellow))



Parts Needed:

16x Tile 1x1 (VSS (Black))
30x Tile 1x1 (M1 Conn (Blue))
3x Tile 1x1 (M1 Input (LB))
18x Tile 1x1 (VDD (Yellow))

