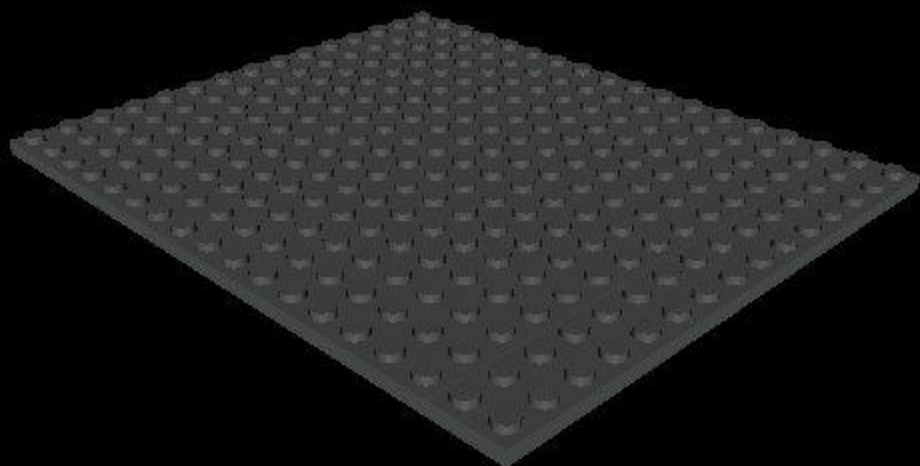


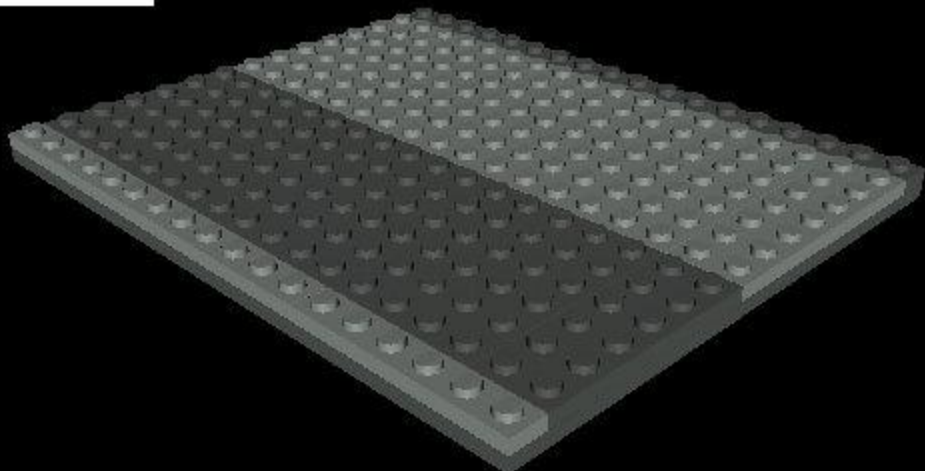
**Parts Needed:**

1x Plate 12x2 (Substrate (DG))  
1x Plate 2x2 (Substrate (DG))  
1x Plate 16x6 (Substrate (DG))  
1x Plate 1x6 (Substrate (DG))  
1x Plate 1x12 (Substrate (DG))  
1x Plate 16x8 (Substrate (DG))



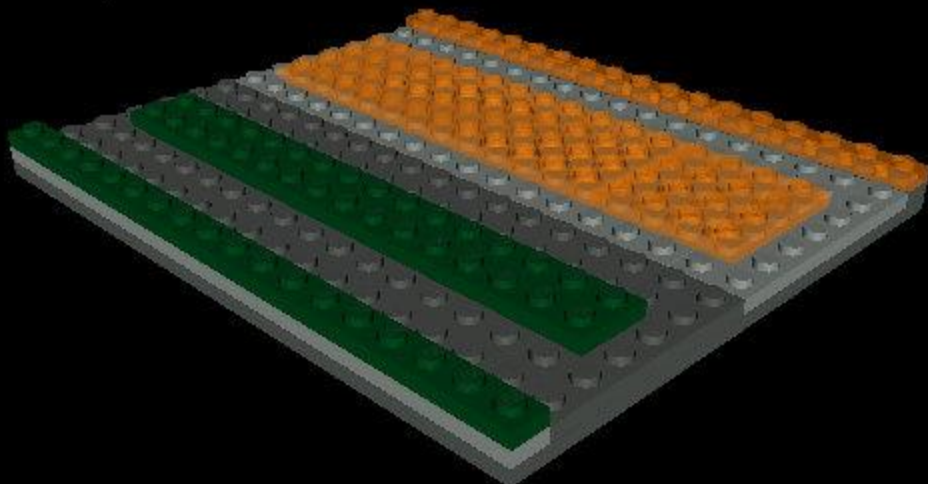
**Parts Needed:**

- 1x Plate 16x6 (N-Well (LG))
- 2x Plate 1x6 (N-Well (LG))
- 1x Plate 2x6 (N-Well (LG))
- 2x Plate 1x12 (N-Well (LG))
- 1x Plate 16x6 (Substrate (DG))
- 1x Plate 1x6 (Substrate (DG))
- 1x Plate 2x6 (Substrate (DG))
- 1x Plate 1x12 (Substrate (DG))



**Parts Needed:**

1x Plate 12x4 (PMOS (D0))  
1x Plate 4x4 (PMOS (D0))  
1x Plate 1x6 (PMOS (D0))  
1x Plate 1x12 (PMOS (D0))  
1x Plate 1x6 (NMOS (DG))  
1x Plate 16x2 (NMOS (DG))  
1x Plate 1x12 (NMOS (DG))



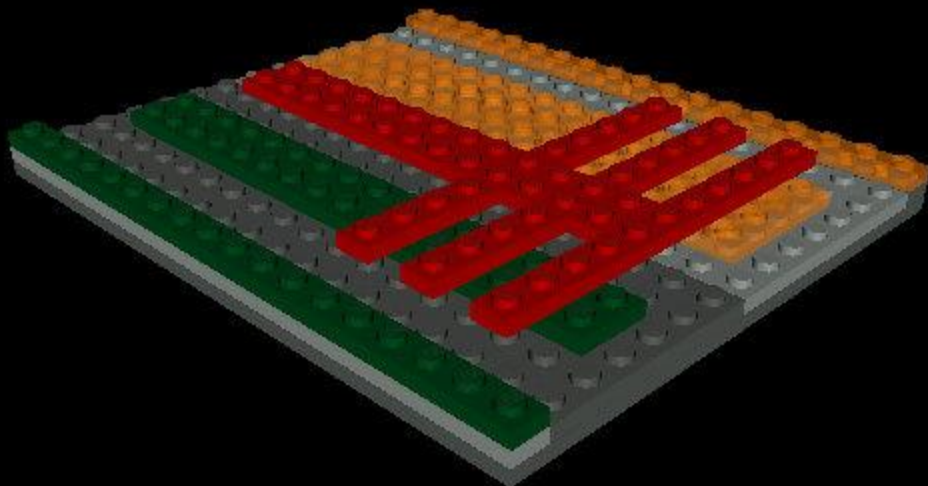
**Parts Needed:**

3x Plate 1x2 (Poly (Red))

3x Plate 1x1 (Poly (Red))

1x Plate 2x8 (Poly (Red))

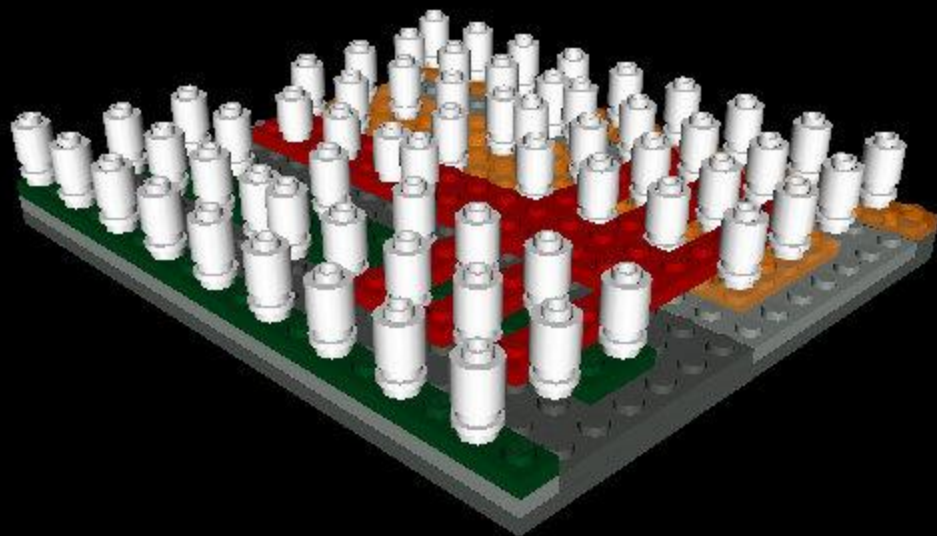
3x Plate 1x10 (Poly (Red))



**Parts Needed:**

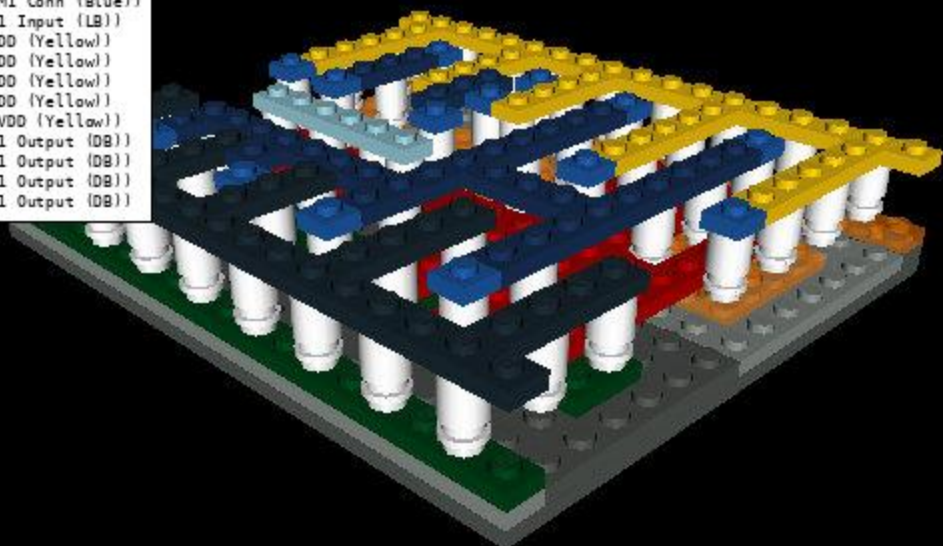
63x Brick 1x1 Round (Contact (White))

59x Plate 1x1 Round (Contact (White))



**Parts Needed:**

2x Plate 1x3 (VSS (Black))  
1x Plate 1x6 (VSS (Black))  
3x Plate 1x4 (VSS (Black))  
1x Plate 1x12 (VSS (Black))  
14x Plate 1x1 (M1 Conn (Blue))  
1x Plate 1x6 (M1 Input (LB))  
2x Plate 1x1 (VDD (Yellow))  
1x Plate 1x3 (VDD (Yellow))  
3x Plate 1x6 (VDD (Yellow))  
2x Plate 1x4 (VDD (Yellow))  
1x Plate 1x10 (VDD (Yellow))  
3x Plate 1x2 (M1 Output (DB))  
2x Plate 1x1 (M1 Output (DB))  
2x Plate 1x8 (M1 Output (DB))  
4x Plate 1x3 (M1 Output (DB))



**Parts Needed:**

- 17x Tile 1x1 (VSS (Black))
- 14x Tile 1x1 (M1 Conn (Blue))
- 4x Tile 1x1 (M1 Input (LB))
- 19x Tile 1x1 (VDD (Yellow))
- 9x Tile 1x1 (M1 Output (OB))

