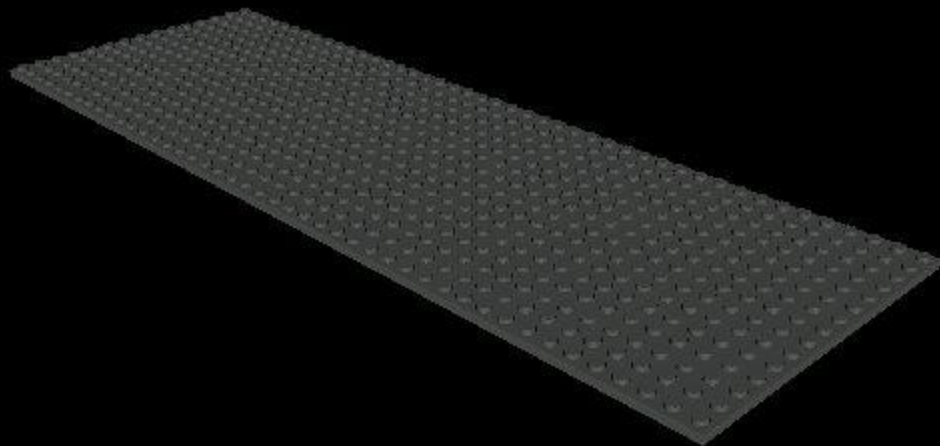


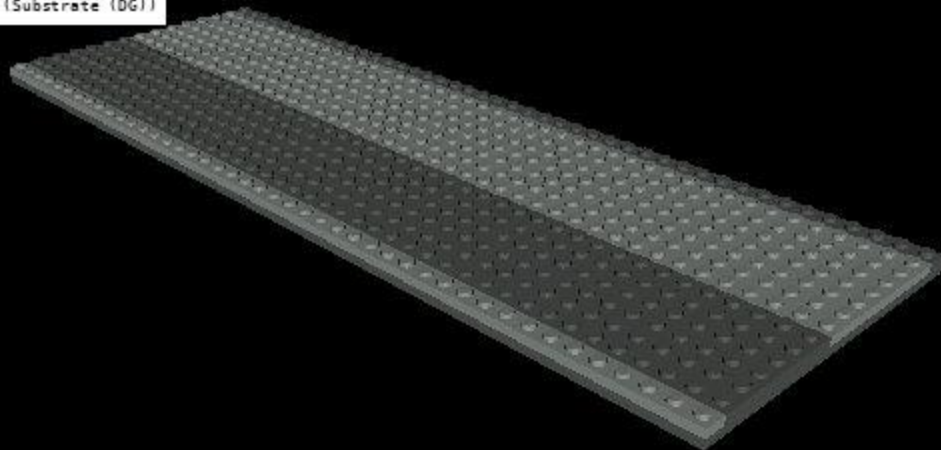
Parts Needed:

- 2x Plate 16x6 (Substrate (DG))
- 2x Plate 14x6 (Substrate (DG))
- 1x Plate 1x8 (Substrate (DG))
- 3x Plate 1x12 (Substrate (DG))
- 2x Plate 16x8 (Substrate (DG))



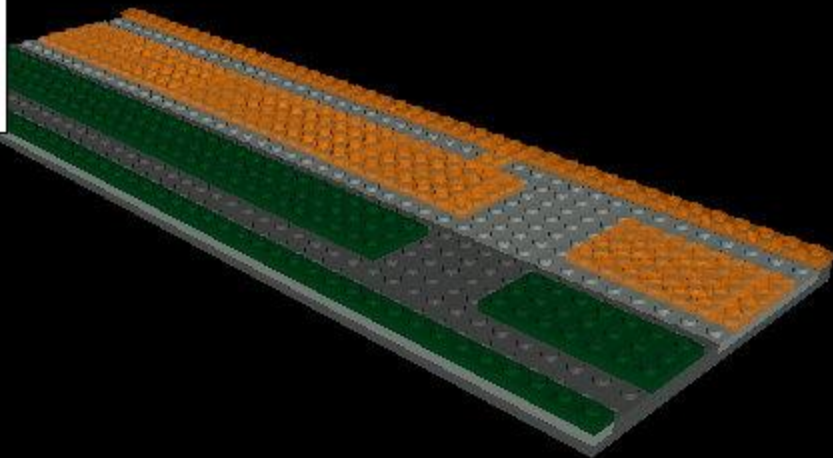
Parts Needed:

- 2x Plate 16x6 (N-Well (LG))
- 1x Plate 12x6 (N-Well (LG))
- 2x Plate 1x8 (N-Well (LG))
- 6x Plate 1x12 (N-Well (LG))
- 2x Plate 16x6 (Substrate (DG))
- 1x Plate 12x6 (Substrate (DG))
- 1x Plate 1x8 (Substrate (DG))
- 3x Plate 1x12 (Substrate (DG))



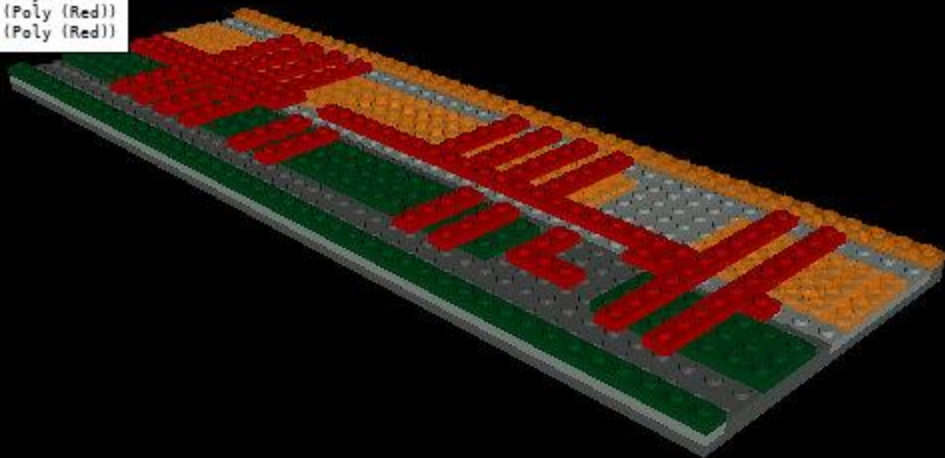
Parts Needed:

1x Plate 1x2 (PMOS (D0))
1x Plate 1x1 (PMOS (D0))
2x Plate 12x4 (PMOS (D0))
2x Plate 6x4 (PMOS (D0))
1x Plate 1x3 (PMOS (D0))
3x Plate 1x4 (PMOS (D0))
3x Plate 1x12 (PMOS (D0))
2x Plate 1x8 (NMOS (DG))
1x Plate 1x3 (NMOS (DG))
1x Plate 1x6 (NMOS (DG))
1x Plate 2x6 (NMOS (DG))
2x Plate 16x2 (NMOS (DG))
5x Plate 1x12 (NMOS (DG))



Parts Needed:

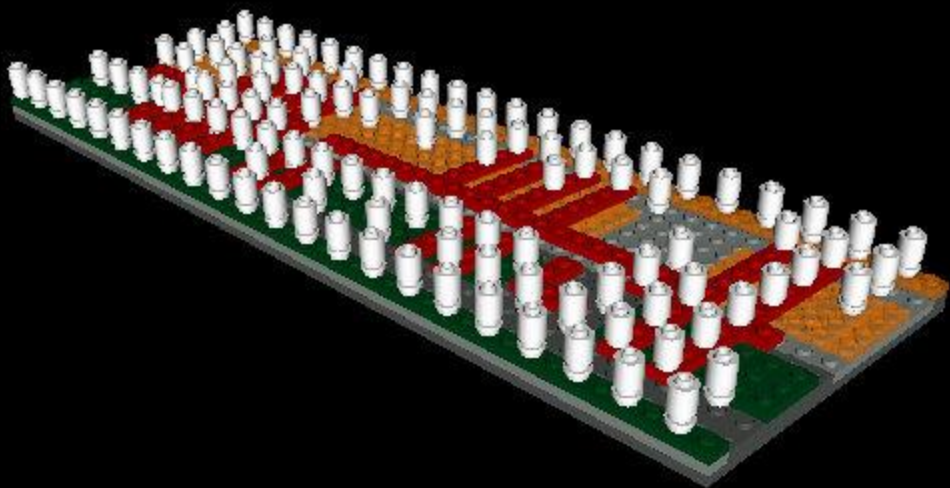
1x Plate 2x4 (Poly (Red))
1x Plate 2x2 (Poly (Red))
6x Plate 1x2 (Poly (Red))
12x Plate 1x1 (Poly (Red))
1x Plate 1x3 (Poly (Red))
1x Plate 1x6 (Poly (Red))
8x Plate 1x4 (Poly (Red))
6x Plate 1x10 (Poly (Red))
1x Plate 1x12 (Poly (Red))



Parts Needed:

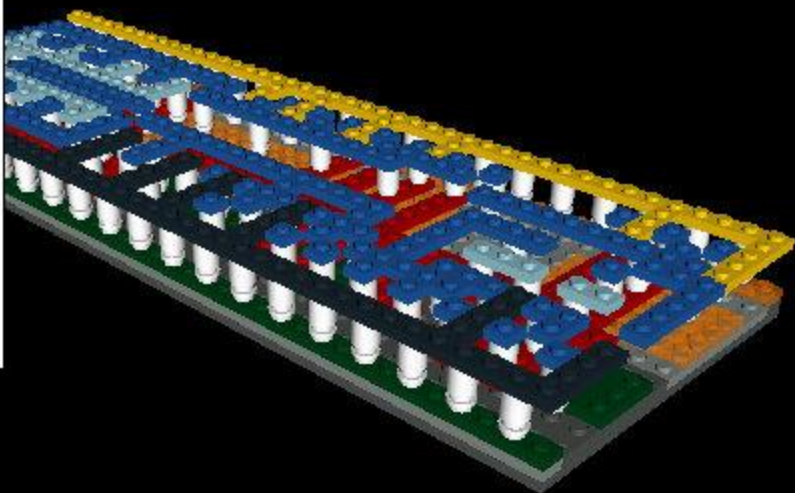
119x Brick 1x1 Round (Contact (White))

91x Plate 1x1 Round (Contact (White))



Parts Needed:

1x Plate 1x8 (VSS (Black))
1x Plate 1x3 (VSS (Black))
5x Plate 1x4 (VSS (Black))
3x Plate 1x12 (VSS (Black))
7x Plate 1x2 (M1 Conn (Blue))
39x Plate 1x1 (M1 Conn (Blue))
1x Plate 2x8 (M1 Conn (Blue))
1x Plate 1x8 (M1 Conn (Blue))
14x Plate 1x3 (M1 Conn (Blue))
2x Plate 1x6 (M1 Conn (Blue))
7x Plate 1x4 (M1 Conn (Blue))
2x Plate 1x12 (M1 Conn (Blue))
8x Plate 1x2 (M1 Input (LB))
5x Plate 1x3 (M1 Input (LB))
1x Plate 1x4 (M1 Input (LB))
1x Plate 1x10 (M1 Input (LB))
1x Plate 1x2 (VDD (Yellow))
1x Plate 1x1 (VDD (Yellow))
1x Plate 1x8 (VDD (Yellow))
4x Plate 1x3 (VDD (Yellow))
1x Plate 1x6 (VDD (Yellow))
5x Plate 1x4 (VDD (Yellow))
1x Plate 1x12 (VDD (Yellow))



Parts Needed:

26x Tile 1x1 (VSS (Black))
59x Tile 1x1 (M1 Conn (Blue))
11x Tile 1x1 (M1 Input (LB))
23x Tile 1x1 (VDD (Yellow))

