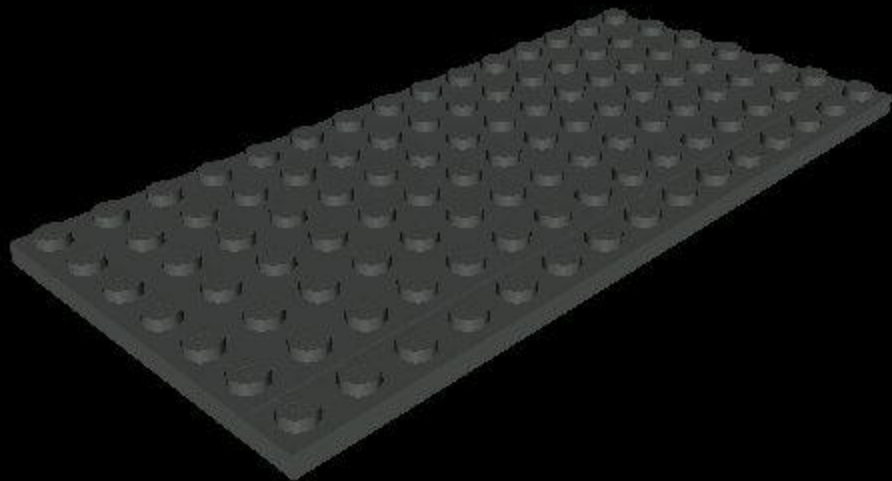


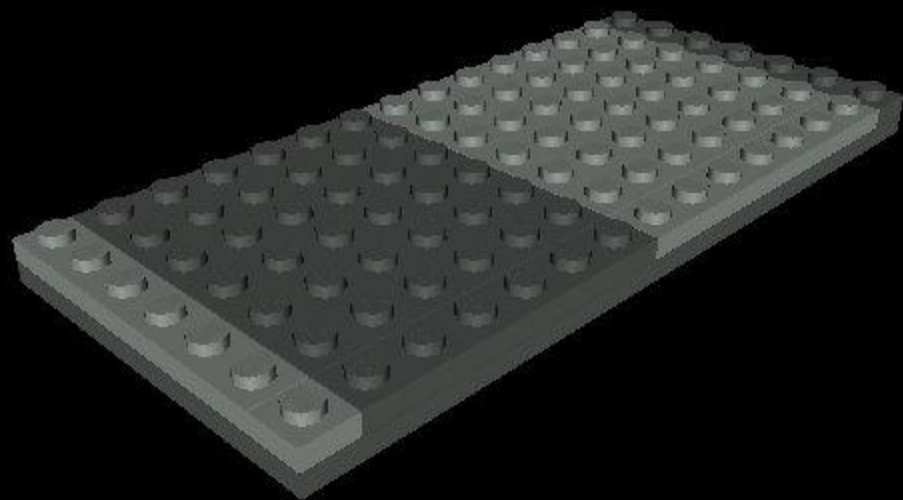
**Parts Needed:**

- 1x Plate 14x6 (Substrate (DG))
- 1x Plate 1x3 (Substrate (DG))
- 1x Plate 1x6 (Substrate (DG))
- 1x Plate 1x12 (Substrate (DG))



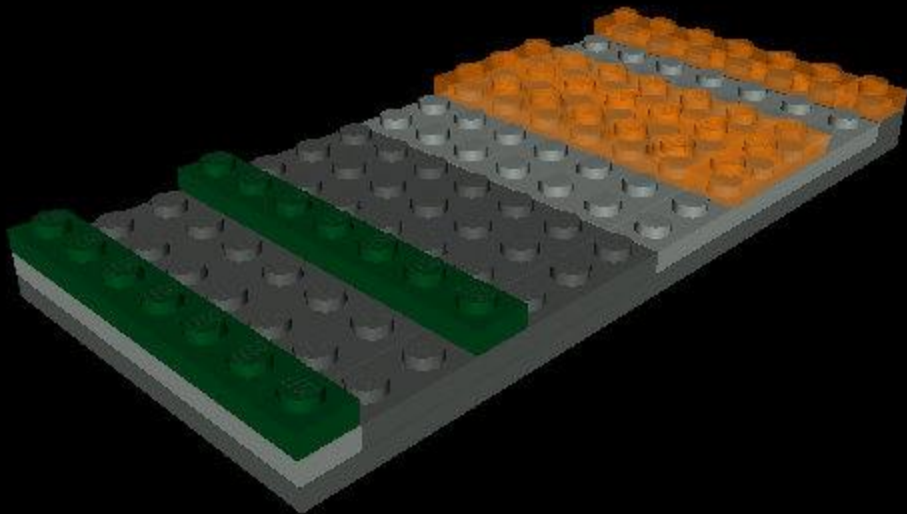
**Parts Needed:**

2x Plate 1x1 (N-Well (LG))  
3x Plate 1x6 (N-Well (LG))  
1x Plate 6x6 (N-Well (LG))  
1x Plate 1x1 (Substrate (DG))  
2x Plate 1x6 (Substrate (DG))  
1x Plate 6x6 (Substrate (DG))



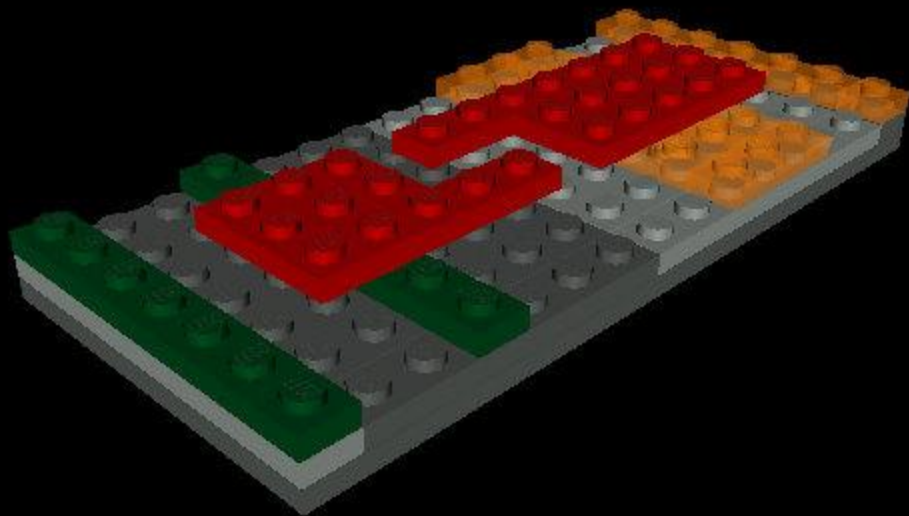
**Parts Needed:**

1x Plate 1x1 (PMOS (D0))  
1x Plate 1x3 (PMOS (D0))  
2x Plate 1x6 (PMOS (D0))  
1x Plate 2x6 (PMOS (D0))  
2x Plate 1x1 (NMOS (DG))  
2x Plate 1x6 (NMOS (DG))



**Parts Needed:**

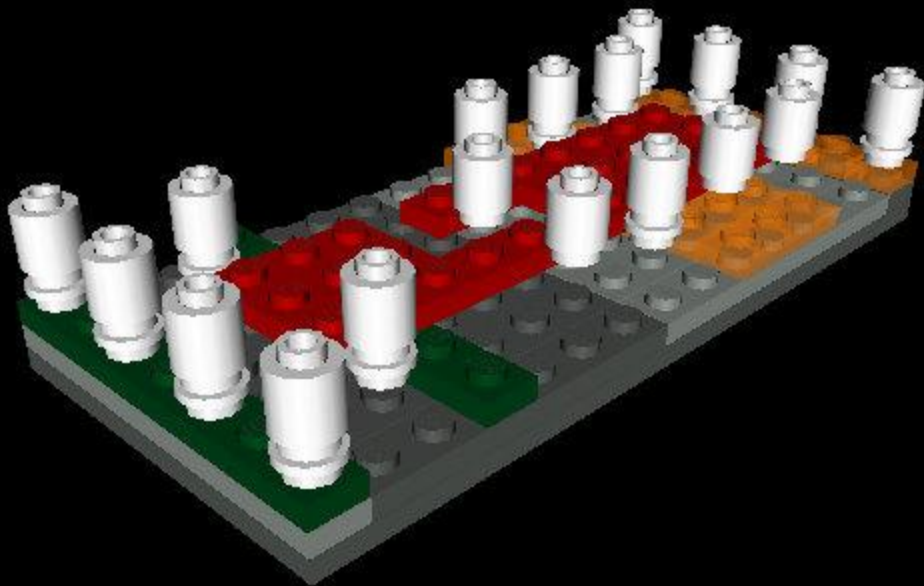
- 1x Plate 2x4 (Poly (Red))
- 1x Plate 2x3 (Poly (Red))
- 1x Plate 1x2 (Poly (Red))
- 2x Plate 1x3 (Poly (Red))
- 1x Plate 1x6 (Poly (Red))



**Parts Needed:**

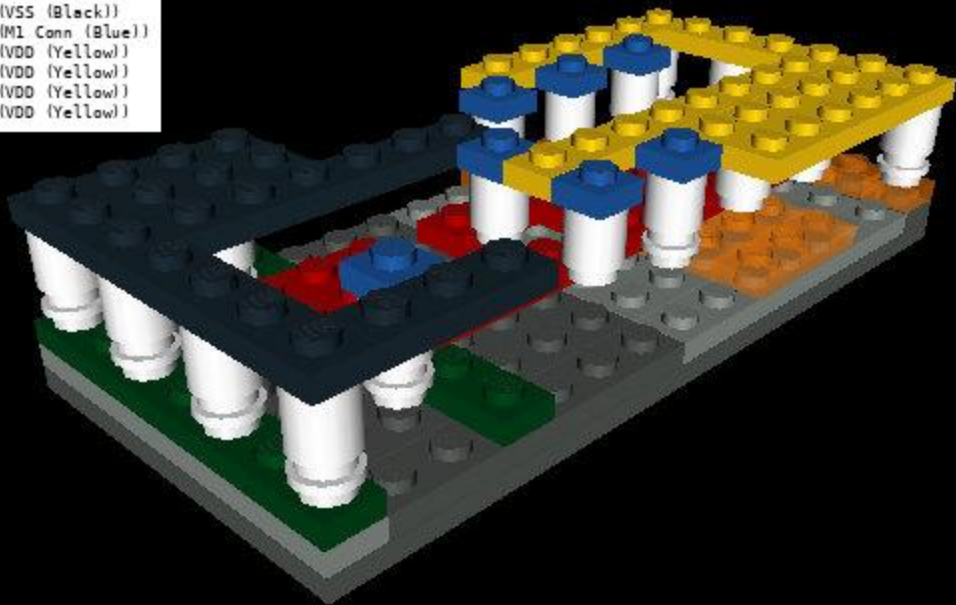
18x Brick 1x1 Round (Contact (White))

14x Plate 1x1 Round (Contact (White))



**Parts Needed:**

1x Plate 2x4 (VSS (Black))  
1x Plate 1x1 (VSS (Black))  
1x Plate 1x3 (VSS (Black))  
1x Plate 1x6 (VSS (Black))  
1x Plate 1x4 (VSS (Black))  
7x Plate 1x1 (M1 Conn (Blue))  
1x Plate 1x8 (VDD (Yellow))  
1x Plate 1x6 (VDD (Yellow))  
1x Plate 1x4 (VDD (Yellow))  
1x Plate 2x6 (VDD (Yellow))



**Parts Needed:**

5x Tile 1x1 (V55 (Black))

7x Tile 1x1 (M1 Conn (Blue))

6x Tile 1x1 (V00 (Yellow))

